

**Oncopole**  
CLAUDIUS REGAUD



INSTITUT UNIVERSITAIRE  
DU CANCER DE TOULOUSE  
**Oncopole**

# "Can clinical research be done at home? The Oncopole experience in Toulouse-France"

ESTRABAUT Myriam

*Head of CT home care platform*

# What are we talking about?

**Decentralized clinical trials** (DCTs) incorporate procedures specific to the needs of clinical research, which are carried out at a distance from the investigating site.

**Digitization of clinical trials** is defined as the dematerialization of certain clinical trial procedures, i.e. the use of electronic tools to deliver information to patients (e.g. econsent), remote monitoring, etc...

Only part of the clinical trial is decentralized, with the core of the clinical trial remaining in the investigating site

## Hybrid

### Decentralized

the trial takes place entirely in the patient's home



### Centralized

all trial procedures are carried out at the investigating center

# Home nursing benefits

Improving patient comfort, quality of life and reduce patient's isolation and fatigue



Facilitating equitable access to care and innovation



Increase patient's inclusion rate and improve patient's retention



Increase the range of care available by giving more patients access to innovation



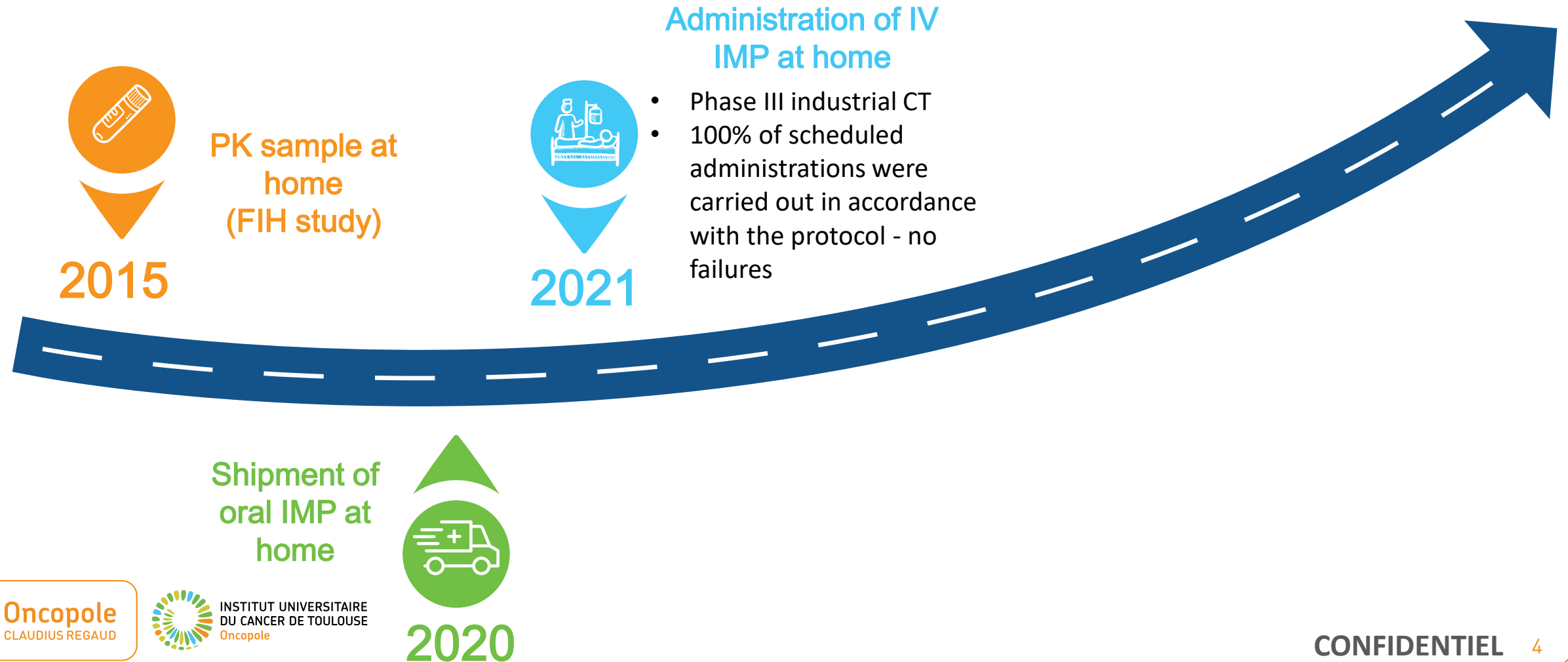
Relieve care services of "simple" treatments to increase the innovative care on offer (early phase)



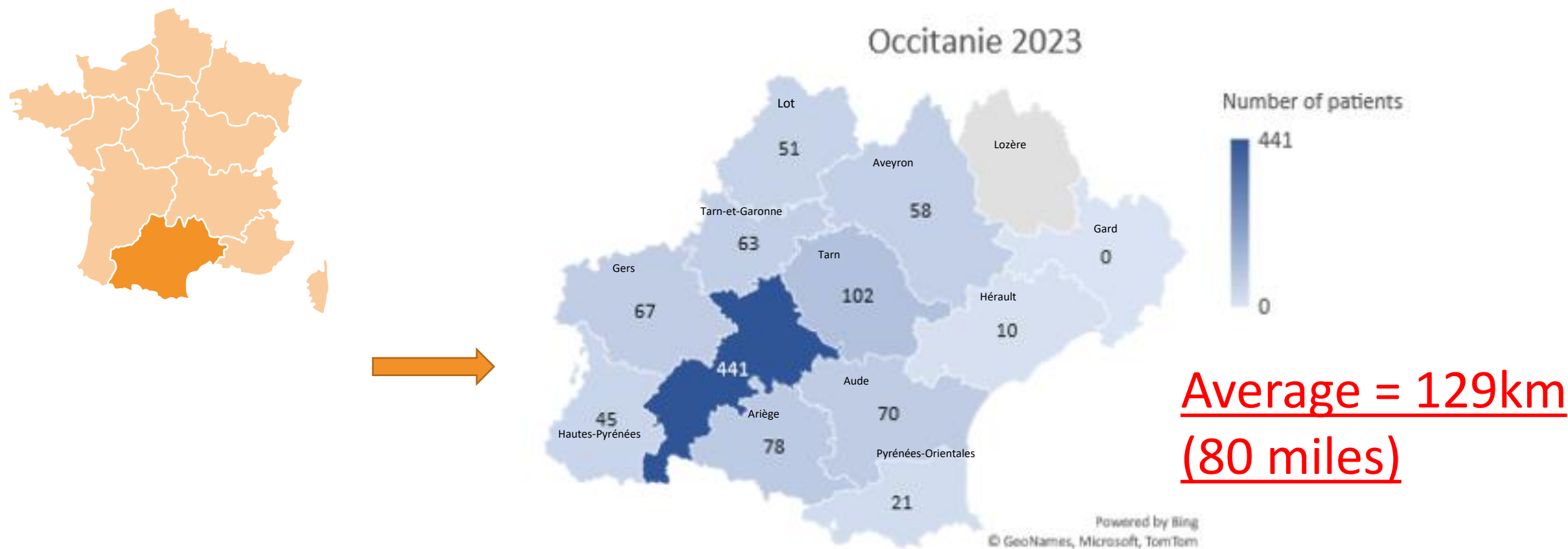
Improve care pathways with an innovative approach



# Our experience



# Context: Patient distribution in 2023



### Home care partner

- Pharmaceutical industry status
- Specialized in Clinical Research
- Previous collaboration with OCR
- Collaboration contract signed in September 2024



### EHR dedicated to hospitalization at home

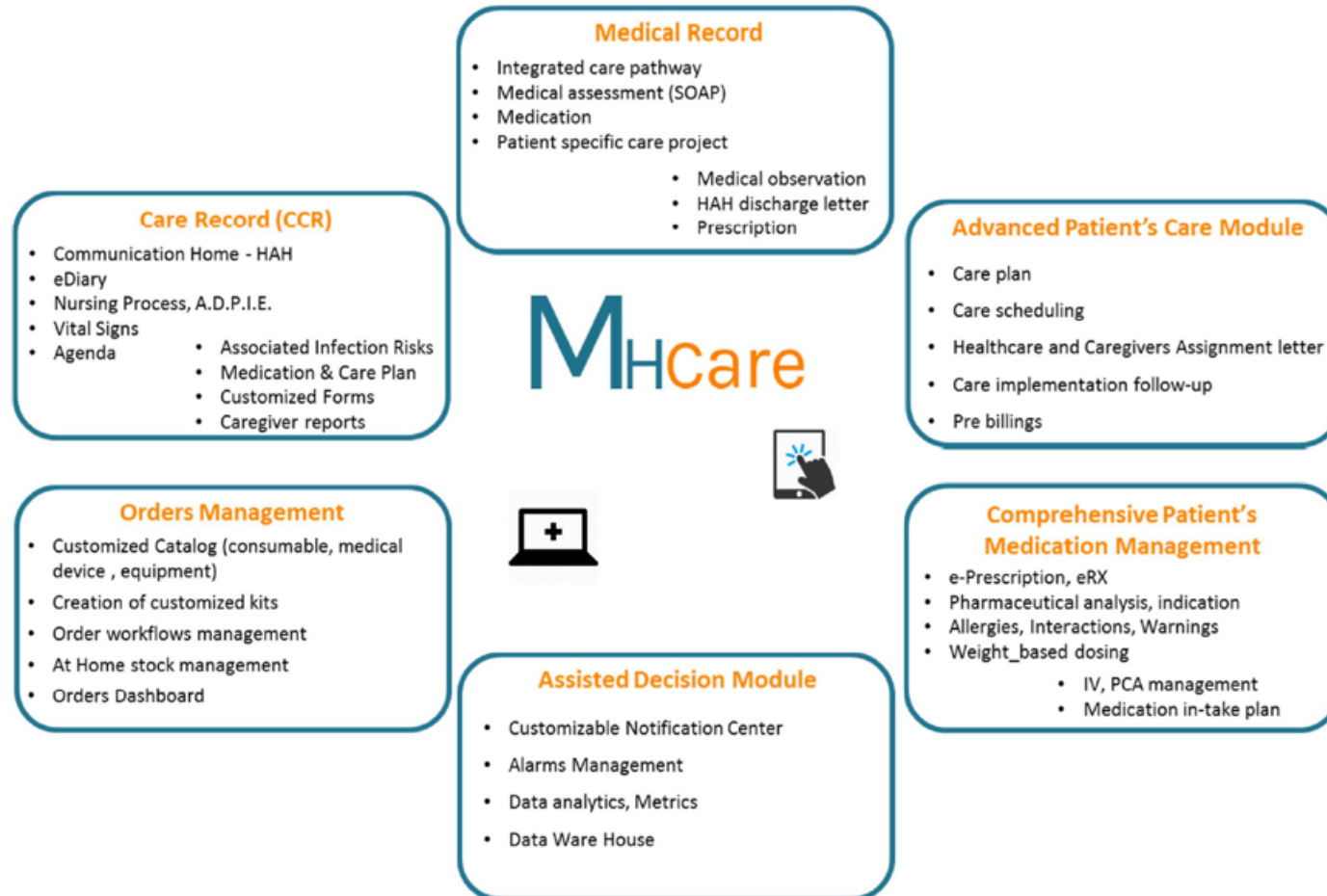
mhcare

#### Electronic Health Record Integrated Care Pathways



- Medical record
  - CPOE, ePrescribing, medical historic
  - Diagnostic, Medication.
- Continuity of care record
  - nursing care plans, guidelines, protocols
  - vital signs monitoring, eforms.
- Multiple Integrated Care pathways
  - Hospital At Home, Complex Chronic conditions
  - Dashboard, Notifications.

- Used treat patients at home outside clinical trials (current practice in France)
- Certified :
  - ISO 13485 ;
  - Class 1 CE approved
  - class 2A certification ongoing
- Electronic transfert of the visit report directly into our EMR in real time



- Full electronic Health Record
- Adapted to CT Home care needs



# MHcare EHR acces



Our site **control** MHCARE® EHR acces used at home

1. Nurse identification
2. Site « push » the patient from site EMR to MHCARE® EHR
3. Site create MHCARE® EHR acces (ID + PASSW) and give acces to the specific patient data
4. After the visit when all the data are electronic transfered , site remove acces to MHCARE® EHR

The nurse do not have a view on all patient's EMR only what she/he need

- Name, contact, adress etc. , Site contact
- Study memo sheet
- Site's note added specificaly for the visit
- Mailbox available to tchat with the site

The MHCARE® EHR is accessible from an application with a computer, IPAD or phone ; **can be used offline**

# Home trial services



## Type of home care

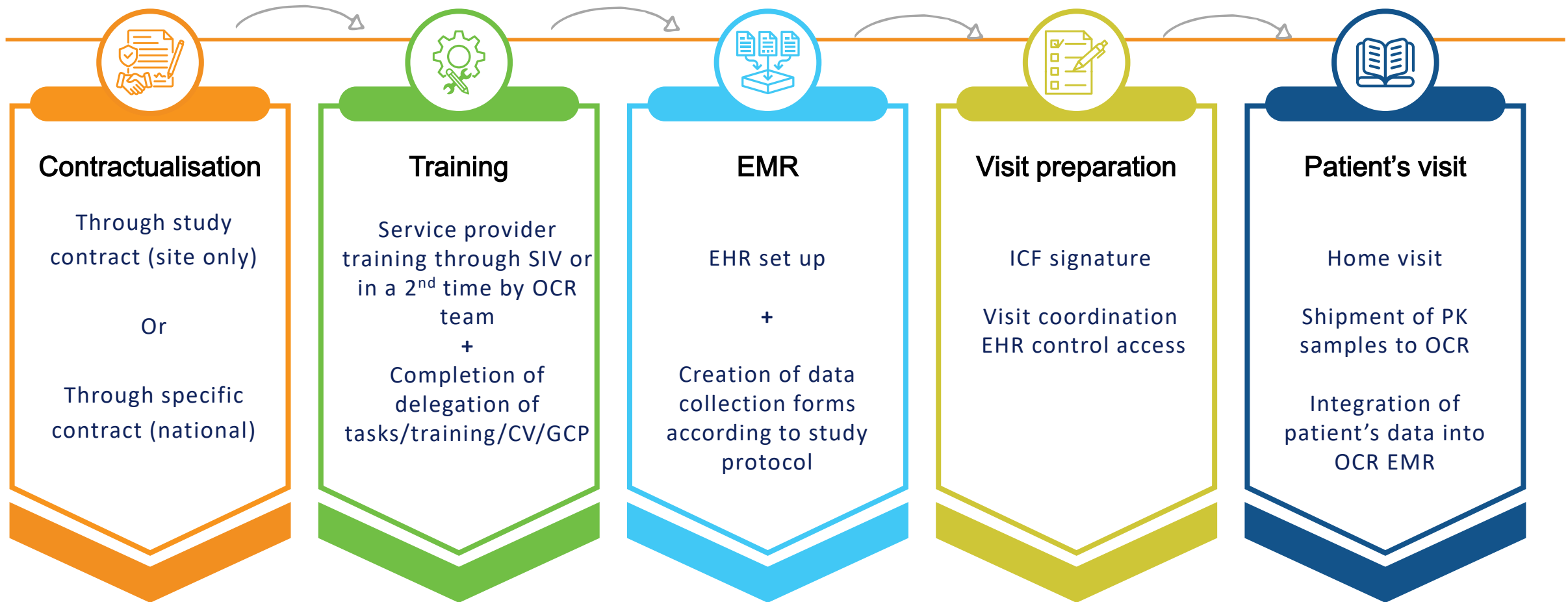
- Vital Signs
- PK sample Processing
- IMP Administration
- ECG
- Caregiver/Patient Training
- Quality of life Questionnaire
- Patient's diary review
- Tele-consultation



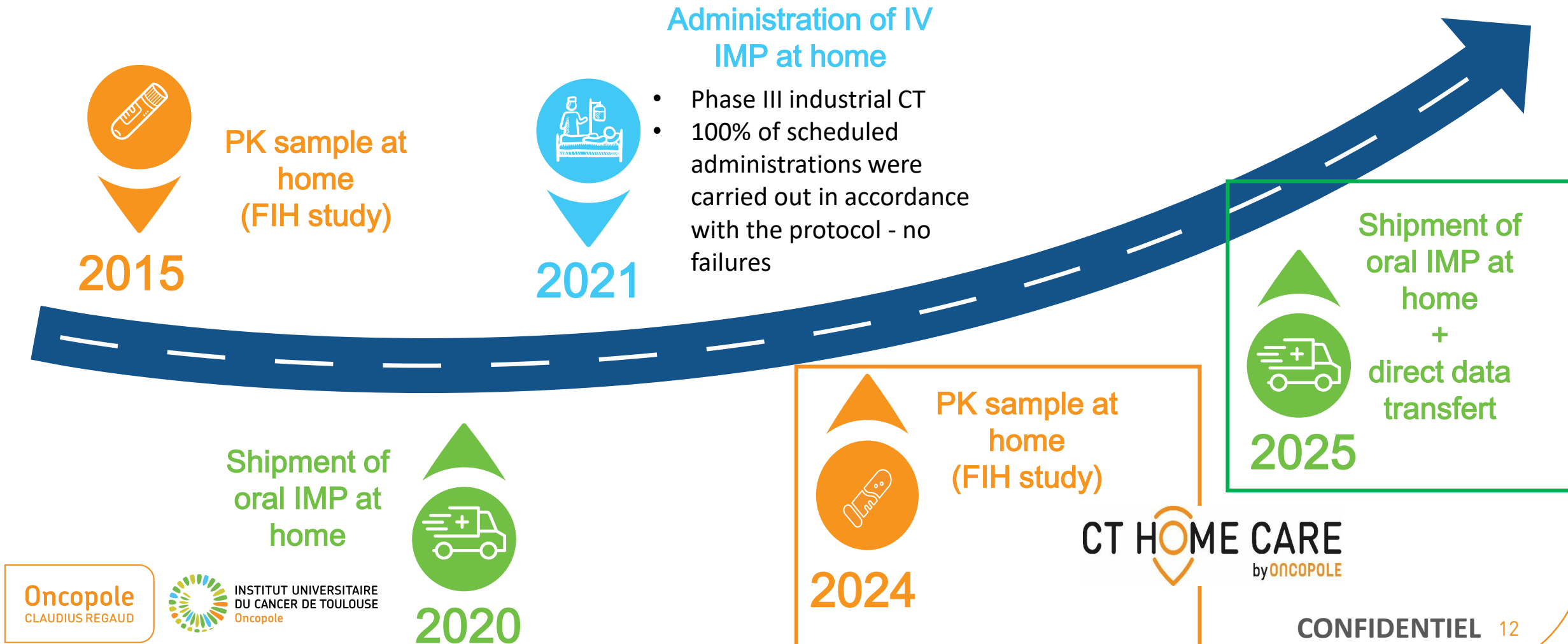
## Type of IMP administration support

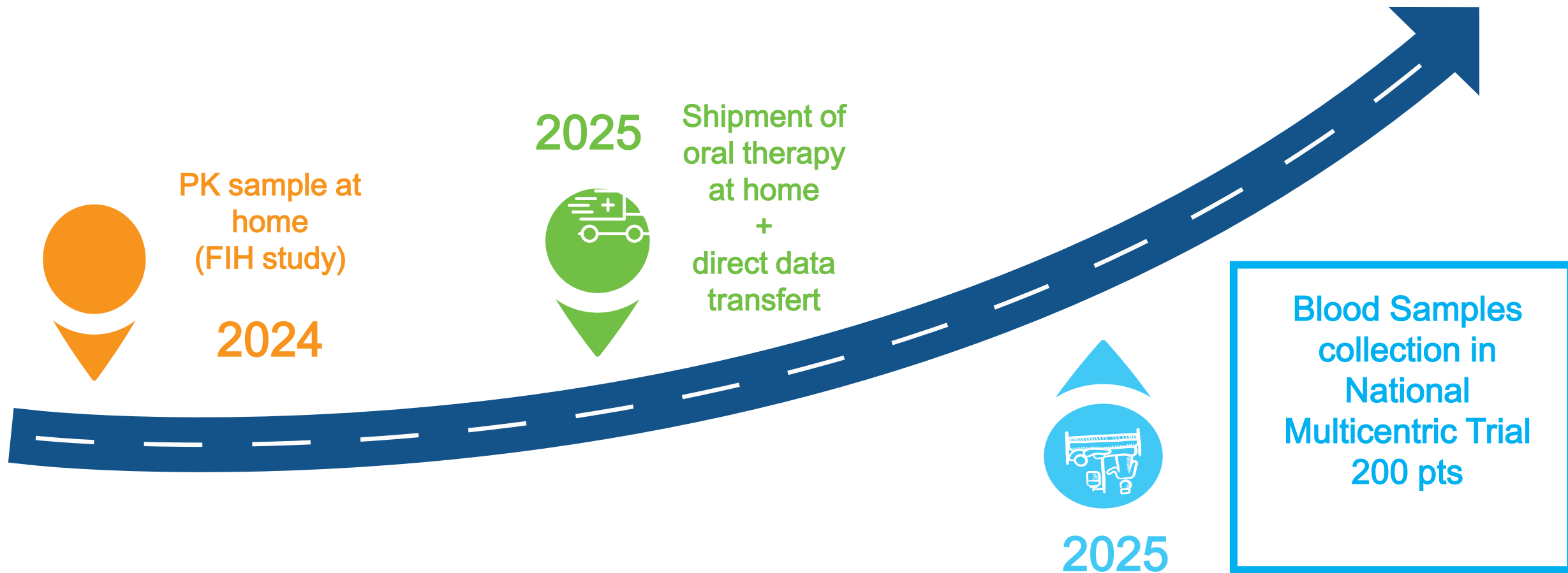
- IMP Infusion
- IMP Injection Subcutaneous
- IMP Injection Intramuscular
- Oral
- Topical
- Transdermal
- Observation

# Operating diagram



# Our experience





# Conclusion

---

CT home care meets the needs of all stakeholder :

- **PATIENT** by reducing protocol constraints / fatigue
- **SPONSOR** by allowing
  - **Faster decentralization implementation** because it is simply an extension of our center's care offering
  - **Faster contractualization** via the study contract
- **SITE** by allowing us to **masters the process** and choosing the personnel intervening at home

# Perspective

---

- Audit of our vendors
- Quality certification of CT home care platform
- Develop our platform to propose decentralization to national territory
- Create our own mobile unit



# Thanks for your attention

**Oncopole**  
CLAUDIUS REGAUD



INSTITUT UNIVERSITAIRE  
DU CANCER DE TOULOUSE  
**Oncopole**